

ENTEK YOUR EXTRUSION SOLUTION

ENTEK Co-rotating Twin-Screw Extruder Throughput Rates (lbs/hr)

QC³

Quick Change
Quick Clean
Quality Control

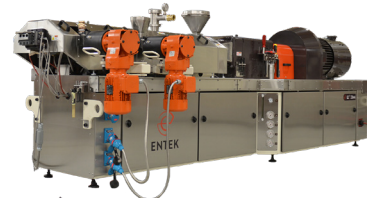
QC³® 27mm

Ideal low-volume
production machine
40hp, 1,200rpm



QC³® 33mm

Perfect for small to
medium lot size production
100hp, 1,400rpm



QC³® 43mm

Medium lot size
custom compounding
200hp, 1,200rpm



HR³

High Rate
High Reliability
High Return

HR³™ 53mm

Medium lot size
custom compounding
150hp, 600rpm or 300hp, 1,200rpm



HR³™ 73mm

Large lot size
custom compounding
400hp, 600rpm or 600hp, 900rpm



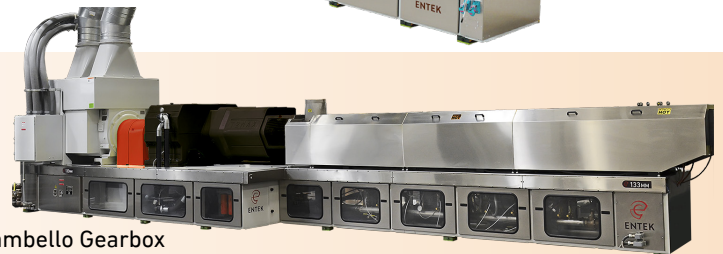
HR³™ 103mm

Masterbatch
compounding
700hp, 300rpm or 1,400hp, 600rpm



HR³™ 133mm

Masterbatch
compounding
1,000hp, 300rpm or
2,500hp, 600rpm
1,300hp, 350rpm w/ Current Zambello Gearbox



TWIN-SCREW EXTRUDERS | REPLACEMENT WEAR PARTS | TURNKEY PLANT SERVICES | MATERIAL HANDLING | TRAINING PROGRAMS

200 Hansard Avenue, Lebanon, Oregon, USA, 97355 • 541.259.1068 • www.entek.com

HT

High Torque



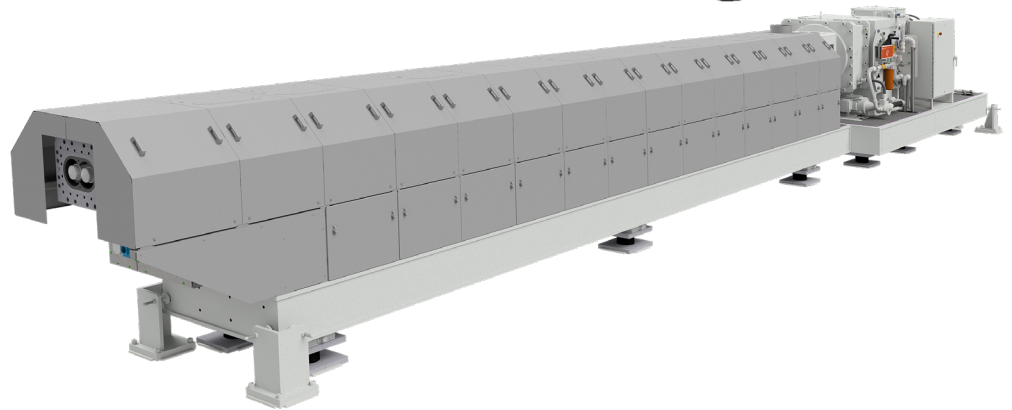
HT 72mm

A true workhorse for continuous 24/7/365 production

600hp, 600rpm or
1,200hp, 1,200rpm

HT 162mm

4,200hp, 600rpm



ENTEK Co-rotating Twin-Screw Extruder Throughput Rates (lbs/hr)

Products & Processes	QC ³ [®] 27mm	QC ³ [®] 33mm	QC ³ [®] 43mm	HR ³ [™] 53mm	HR ³ [™] 73mm	HR ³ [™] 103mm	HR ³ [™] 133mm	HT 72mm	HT 162mm
Max Screw Speed (rpm)	1200	1400	1200	1200	900	600	350	1200	600
Max Power (hp)	40	100	200	300	600	1400	1300	1200	4200
HDPE, LDPE, PP compounding. Maximum rate capability (pph)	100 to 250	300 to 700	500 to 1,400	800 to 2,000	2,200 to 5,400	3,700 to 9,500	6,700 to 17,000	2,800 to 10,800	11,700 to 30,000
PS, SAN, ABS compounding. Maximum rate capability (pph)	150 to 250	400 to 600	800 to 1,200	1,200 to 1,800	3,400 to 4,700	5,800 to 9,500	10,300 to 17,000	4,300 to 9,400	18,000 to 30,000
PC, PA6, 6/6, 6/10, 6/12, 11, 12 compounding. Maximum rate capability (pph)	100 to 200	250 to 550	450 to 1,100	700 to 1,600	1,800 to 4,300	2,800 to 7,500	5,000 to 13,500	2,300 to 8,600	8,700 to 23,600
Fiber Filled (organic) Olefins, WPC compounding. Maximum rate capability	50 to 150	200 to 500	350 to 1,000	500 to 1,400	1,000 to 2,500	2,500 to 5,000	6,000 to 12,000	1,500 to 3,000	10,500 to 21,000

YOUR EXTRUSION SOLUTION

TWIN-SCREW EXTRUDERS | REPLACEMENT WEAR PARTS | TURNKEY PLANT SERVICES | MATERIAL HANDLING | TRAINING PROGRAMS

200 Hansard Avenue, Lebanon, Oregon, USA, 97355 • 541.259.1068 • www.entek.com